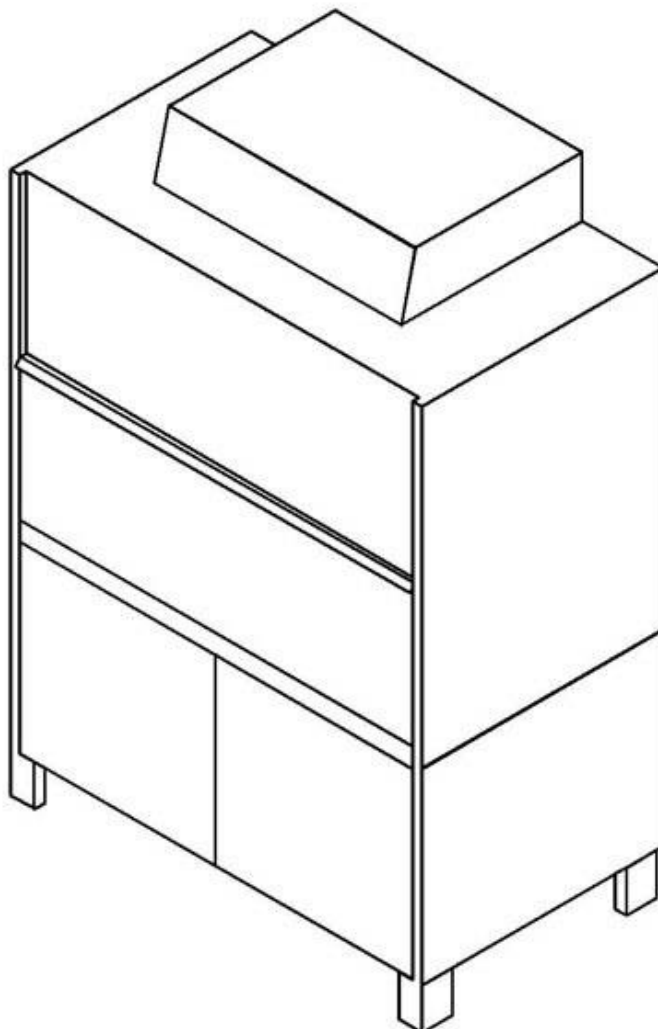


winterhalter

Spare Parts List GR 66

Edited: 03/97
Revised: 22.02.07

Part no.: 89002201



Summary

Water inlet	Pages	1	and	2
Tank and tank heating	Pages	3	and	4
Water outlet I	Pages	5	and	6
Water outlet II	Pages	7	and	8
Wash system I	Pages	9	and	10
Wash system II	Pages	11	and	12
Reversing mechanism (⇒ 364 337)	Pages	13	and	14
Reversing mechanism (364 338 ⇒)	Pages	15	and	16
Rinse I	Pages	17	and	18
Rinse II	Pages	19	and	20
Rinse III	Pages	21	and	22
Dosing	Pages	23	and	24
Panelling	Pages	25	and	26
Door	Pages	27	and	28
Electrical parts I	Pages	29	and	30
Electrical parts II	Pages	31	and	32
Electrical parts III	Pages	33	and	34

Please note the following points with regard to this list:

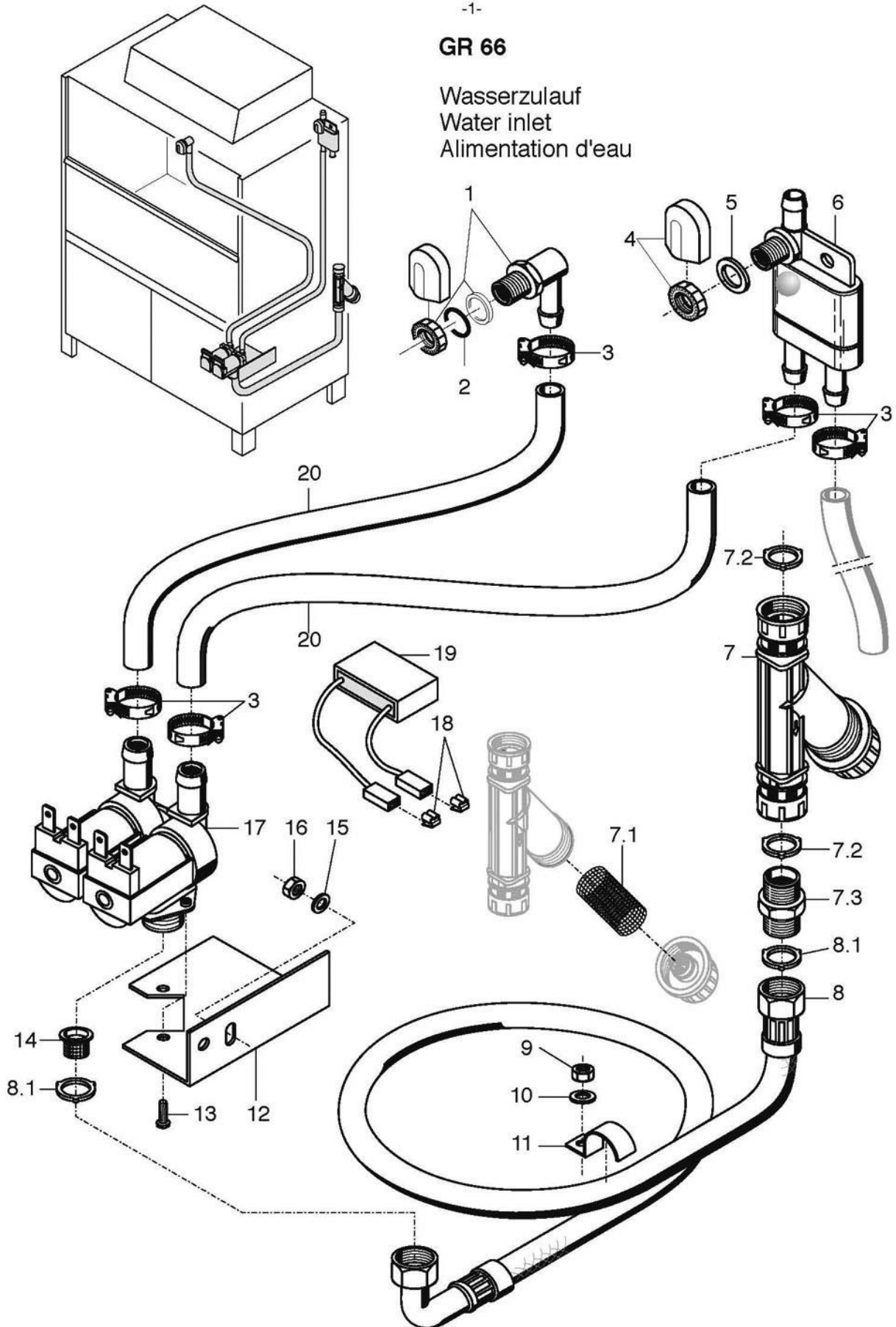
See separate list for racks and accessories.

Enter the required quantity in the column marked "Pc." if more than 1 part is installed and if this part is not a standard part.

-1-

GR 66

Wasserzulauf
Water inlet
Alimentation d'eau



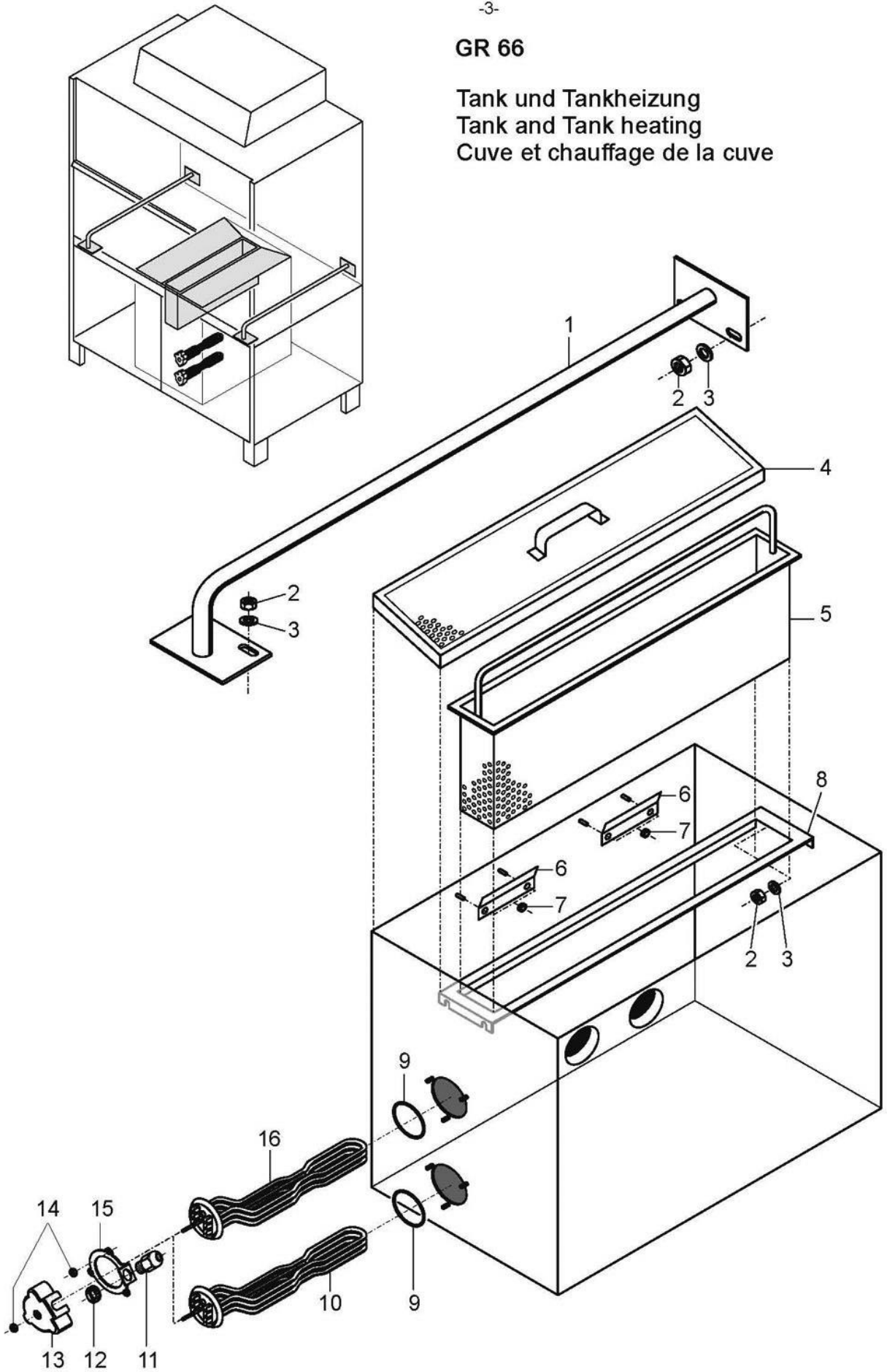
GR 66

Water inlet

Item	Designation	Part no.	Pc.	Notes
1	Set tank inlet	55 31 007		incl. pos. 2
2	Seal; D21 x D28 x 2,0	27 09 011		replaced by 55 31 007
2	Seal; \varnothing 20.5 x \varnothing 28.5 x 2.0	27 01 002		replaced by 55 31 007
2	O-ring; 20 x 3	27 07 031		
3	Hose clip; \varnothing 14 - \varnothing 24	28 02 108		
4	Set tank inlet	61004545		incl. pos. 5
5	Seal; \varnothing 17 x \varnothing 24 x 2.0	62001366		
6	Backflow restrictor, side	35 01 194		
7	Dirt trap cpl.	80002153		Incl. items 7.1, 7.2 and 7.3
7.1	Dirt trap	80002728		
	Strainer for dirt trap with right-angled outlet	31 06 135		
7.2	Seal; \varnothing 16 x \varnothing 24 x 3.0	80002241	2	
7.3	Double nipple	80002167		
8	Metal hose; DN15 X 2000; G3/4"	29 01 316		incl. pos. 8.1
8.1	Seal; \varnothing 16 x \varnothing 24 x 3.0	80002241	2	
9	Hex nut; M 5 self-locking	21 05 302		
10	Washer; \varnothing 5.3 x \varnothing 12 x 0.8	22 02 213		
11	Clip	55 25 017	2	
12	Solenoid valve support	70200298		
13	Pan-head screw; M 4 x 8	20 10 210		
14	Strainer	31 06 186		
15	Washer; \varnothing 6.4 x \varnothing 12.5 x 1.6	22 05 302		
16	Hex nut; M 6 self-locking	21 05 304		
17	Double solenoid valve; 220-240V; 50/60Hz	31 06 182		
	Double solenoid valve; 180-220V; 50-60Hz	31 06 200		Japan
18	Tab connector	31 12 018		connect parallel to item 17
19	RC element; 0,15 μ F; 3,3k Ω	31 13 114	2	
20	Hose; DN 13.5 x 3.5 x 1790	40 02 029	2	Per metre
n.p.	Extension hose; 1m	29 01 307		Optional extra
n.p.	Seal; \varnothing 16 x \varnothing 24 x 3.0	80002241		Optional extra

GR 66

Tank und Tankheizung
Tank and Tank heating
Cuve et chauffage de la cuve



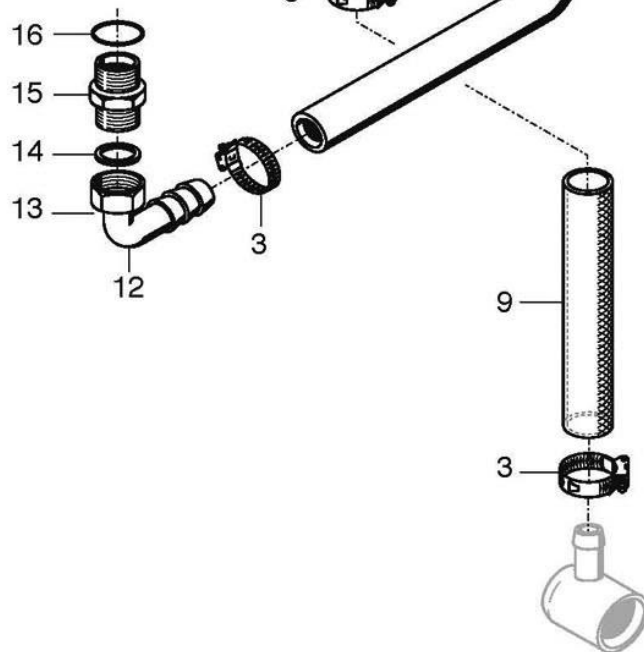
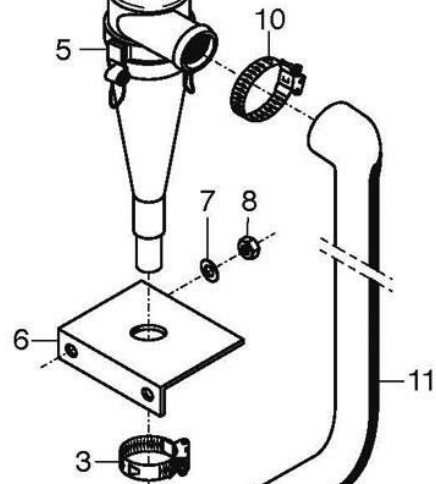
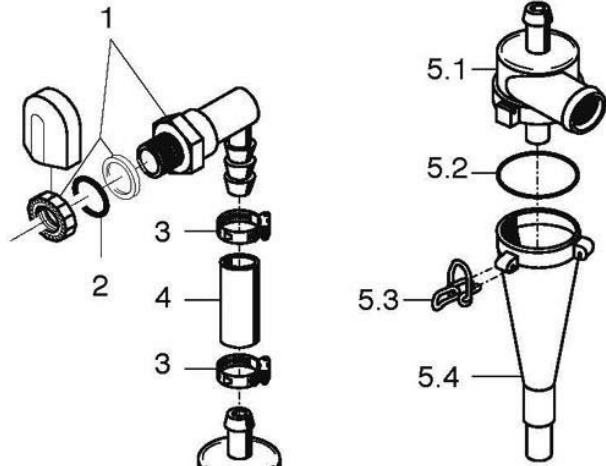
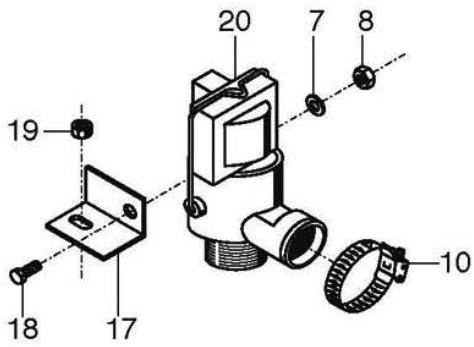
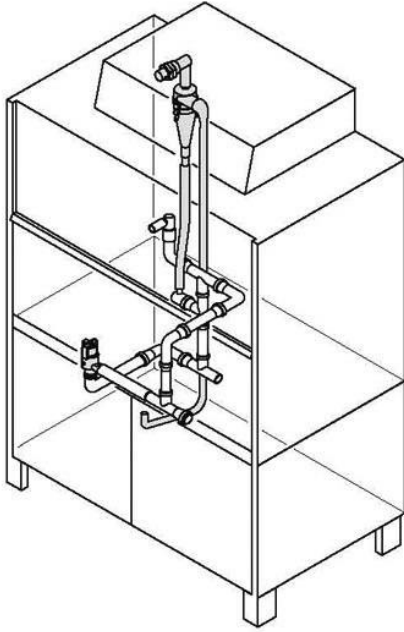
GR 66

Tank and tank heating

Item	Designation	Part no.	Pc.	Notes
1	Rack support	65003200	2	
2	Hex nut; M 6 self-locking	21 05 304		
3	Washer; \varnothing 6.4 x \varnothing 18 x 1.6	22 05 302		
4	Surface strainer	65003024	2	
5	Sump strainer	65003029		
6	Angle	65003261	4	
7	Hex nut; M 5 self-locking	21 05 302		
8	Strainer frame	65003204		
9	O-ring; 43 x 7	27 07 069	2	
10	Heating element cranked; 6.0kW; 3 x 230/400V	31 03 132		
	Heating element cranked; 6.0kW; 3 x 240/420V	31 03 133		
	Heating element cranked; 6.0kW; 3 x 200/346V	31 03 134		
n.p.	Star bridge	31 23 088		
11	Cable gland; PG 13.5	31 10 040	2	
12	Hex nut PG; 13,5	31 10 041	2	
13	Cap for heating element	31 03 014	2	
14	Hex nut; M 5	21 01 303		
15	Clamping plate	55 19 018	2	
16	Heating element cranked; 9.0kW; 3 x 230/400V	31 03 018		For creep-starting pump

GR 66

Wasserablauf I
Water drain I
Ecoulement d'eau I



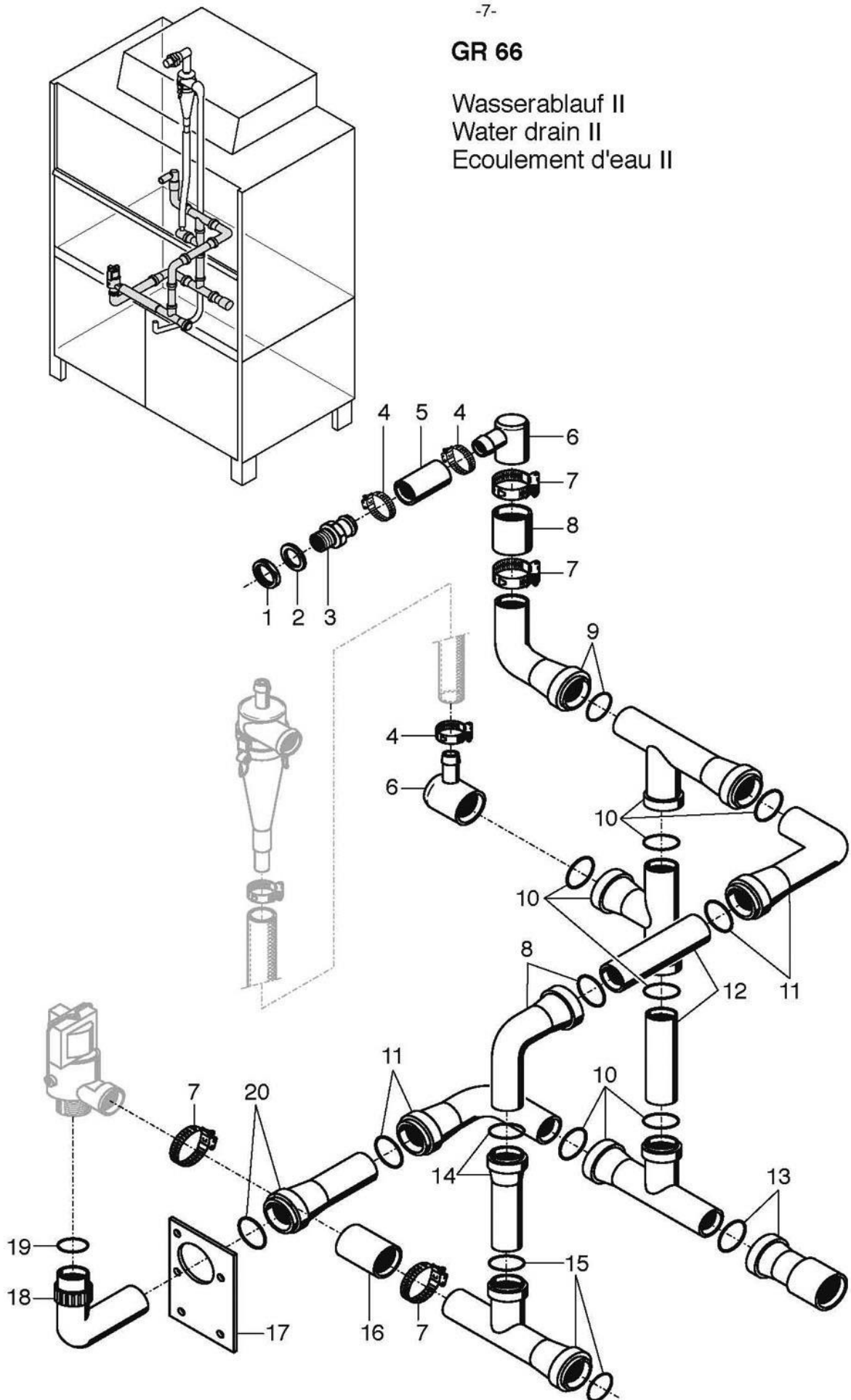
GR 66

Water outlet I

Item	Designation	Part no.	Pc.	Notes
1	Set Mediamat inlet	55 31 001		incl. Pos. 2, 3, 4
2	Seal; D21 x D28 x 2,0	27 09 011		replaced by 55 31 001
2	Seal; \varnothing 20.5 x \varnothing 28.5 x 2.0	27 01 002		replaced by 55 31 001
2	O-ring; 20 x 3	27 07 031		
3	Hose clip; \varnothing 20 - \varnothing 30	28 02 109		
4	Hose section DN 16 x 4 x 800	61002797		
5	Mediamat cpl.	55 27 040		Incl. items 5.1 - 5.4
5.1	Head piece inlet; \varnothing 30	35 01 124		
5.2	O-ring; 51 x 3	27 07 043		
5.3	End piece fastener; \varnothing 2	28 04 041	4	
5.4	Accelerator; \varnothing 75 x 169 x \varnothing 4.3	35 01 035		
6	Mediamat retaining bracket	61000658		
7	Washer; \varnothing 5.3 x \varnothing 10 x 1.0	22 01 300		
8	Hex nut; M 5 self-locking	21 05 302		
9	Fabric hose; DN 19 x 4 x 830	40 01 016		Per metre
10	Hose clip; \varnothing 32 - \varnothing 52 x 12	28 02 110		
11	Reducing hose; \varnothing 30/16 x 5 x 1530	40 03 036		
12	Mediamat connecting bend	29 06 524		
13	Cap nut; G 3/4" x 20; width across flats 30	29 07 203		
14	Seal; \varnothing 19.5 x \varnothing 24 x 1.5	27 09 010		
15	Mediamat connecting nipple; G 1/2" x G 3/4" x 32	30 11 502		
16	O-ring; 20 x 3.5	27 07 040		
17	Support	65003260		
18	Hex-head screw; M 5 x 10	20 01 300		
19	Hex nut; M 6 self-locking	21 05 304		
20	Solenoid drain valve; 200-240V;50-60HZ;DN 40	31 06 045		
n.p.	Diaphragm for solenoid drain valve	31 06 193		
n.p.	Connector socket for solenoid drain valve	31 06 082		

GR 66

Wasserablauf II
Water drain II
Ecoulement d'eau II



GR 66

Water outlet II

Item	Designation	Part no.	Pc.	Notes
1	Lock nut; G 1/2" x 8,0; width across flats 32	20 06 336		
2	Seal; ø 21 x ø 28 x 2.0	27 09 011		
3	Hose stem; ø 26 x 41; G 1/2"; width across flats 27	80001403		
4	Hose clip; ø 20 - ø 30	28 02 109		
5	Outlet hose; DN 25 x 4.5 x 40	40 01 038		Per metre
6	Outlet angle; 66 x 70	35 01 208	2	
7	Hose clip; ø 47 - ø 67 x 12	28 02 115		
8	Hose; DN 40 x 4 x 80	40 02 009		Per metre
9	HT bend; DN 40	30 15 505		Shortened
10	HT branch; DN 40 x DN 40 x DN 40	30 15 501	3	
11	HT bend; DN 40	30 15 505	3	
12	HT tube; DN 40 x 500	30 15 502	2	Shorten to 300
13	HT reducer; DN 50 x DN 40	30 15 521		
14	HT tube; DN 40 x 500	30 15 502		Shorten to 350
15	HT branch; DN 50 x DN 40 x DN 50	30 15 509		
16	Hose; DN 50 x 4.5 x 100	40 02 012		Per metre
17	Retaining plate	65000246		
18	Outlet bend; G 1 1/2" x 40	29 04 502		
19	Seal; ø 25 x ø 45 x 2.0	29 04 511		
20	HT tube; DN 40 x 500	30 15 502		Shorten to 100

Functions / direction of flow:

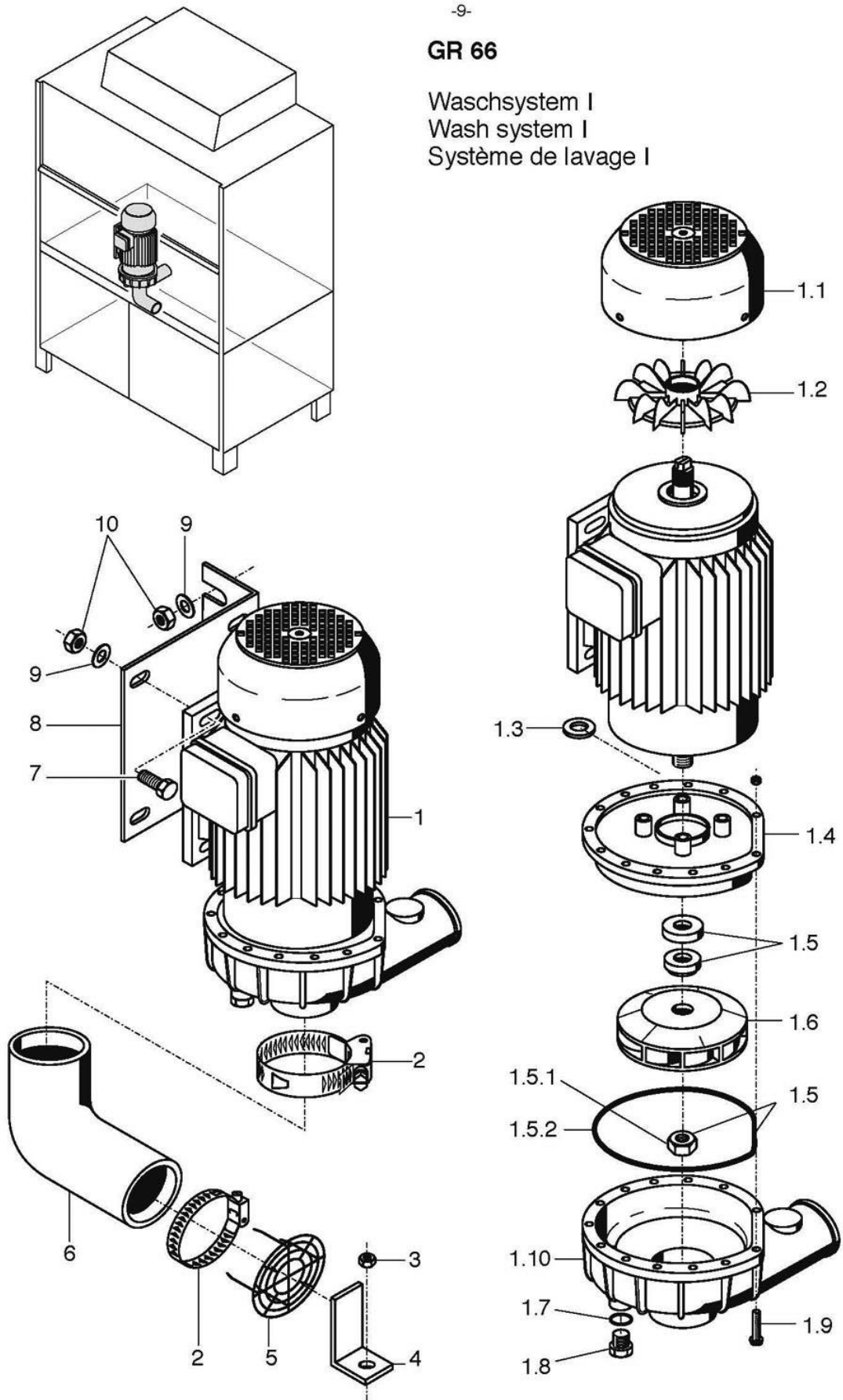
* Tank outlet: items 15, 16, 18, 20, 11, 10 and 13

** Tank level control: items 15, 14, 8, 12, 11, 10, 12, 10 and 13

*** Overflow and ventilation: items 1 - 9

GR 66

Waschsystem I
Wash system I
Système de lavage I



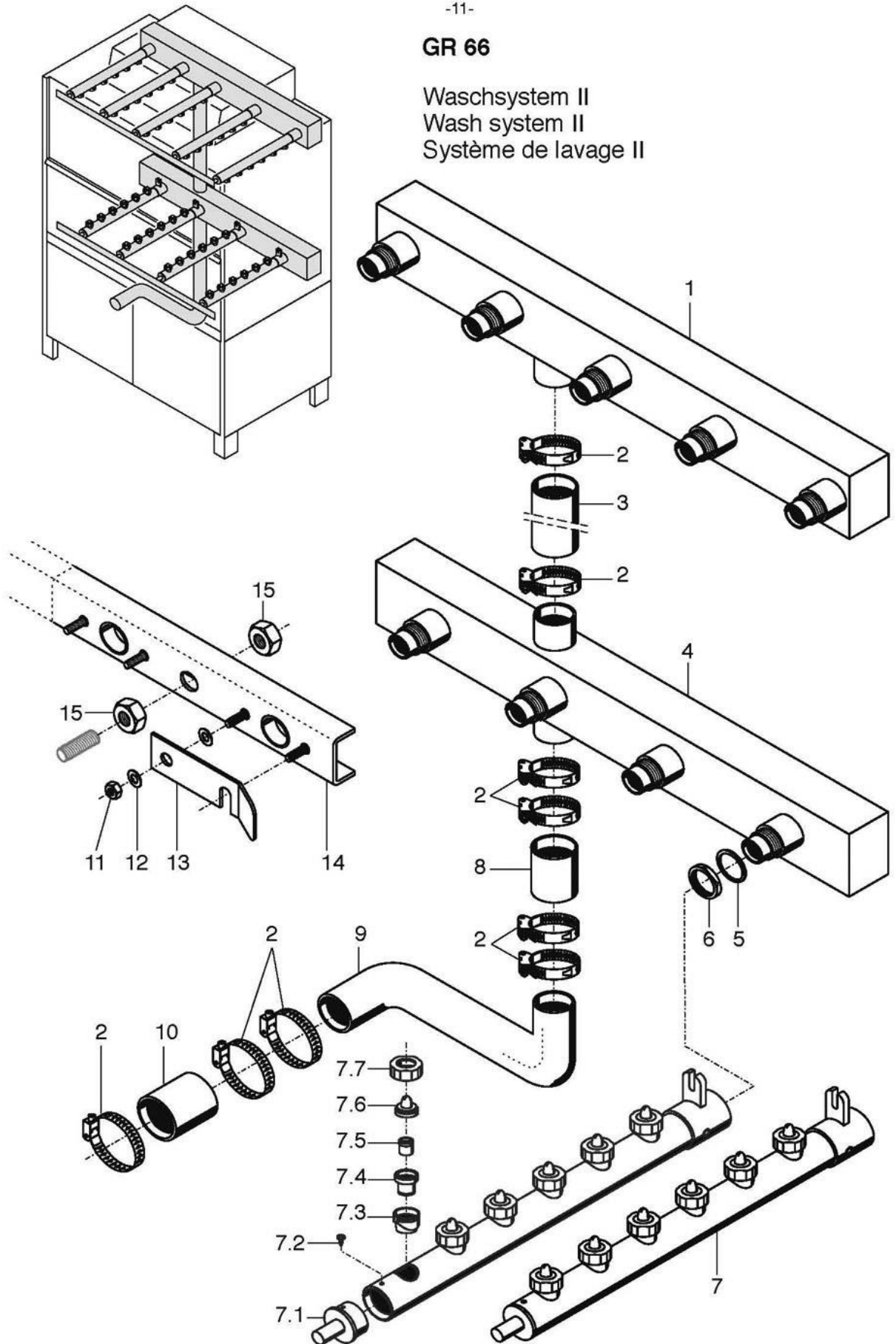
GR 66

Wash system I

Item	Designation	Part no.	Pc.	Notes
1	Pump cpl.; 2.6kW; 230-240/400-420V / 3 / 50Hz	31 02 340		Incl. items 1.1 – 1.10
	Pump cpl.; 2.6kW; 230/400V / 3 / 60Hz	31 02 347		
	Pump cpl.; 2.6kW; 200/346V / 3 / 50Hz	31 02 348		
	Pump cpl.; 2.6kW; 200/346V / 3 / 60Hz	31 02 349		
1.1	Fan impeller cover	31 02 309		
1.2	Fan impeller	31 02 308		
1.3	Seating ring	31 02 304		
1.4	Flange end shield	31 02 396		
1.5	Sealing kit	80002671		Incl. items 1.5.1 – 1.5.2
1.5.1	Nut; M14 LH	31 02 404		
1.5.2	Seal	31 02 307		
1.6	Pump impeller; ø 136 mm	31 02 306		For 50 Hz pump
	Pump impeller; ø 115.5 mm	31 02 310		For 60 Hz pump
1.7	O-ring; 20 x 3.5	27 07 040	2	
1.8	Filler plug; G 1/2" x 20.5	35 01 108	2	
1.9	Hex-head screw; M4 x 25; 8.8	20 01 020		
1.10	Pump housing	31 02 243		
2	Hose clip; ø 70 - ø 90	28 02 120		
3	Hex nut; M 5 self-locking	21 05 302		
4	Angle	65001983		
5	Suction strainer	61002500		
6	Suction elbow; DN 62 x 9; 80 x 180	40 03 028		
7	Hex-head screw; M 8 x 30	20 01 304		
8	Angle	65003214		
9	Washer; ø 8.4 x ø 17 x 1.6	22 01 303		
n.p.	Lock washer; B 8	23 03 301		
10	Hex nut; M 8	21 01 305		

GR 66

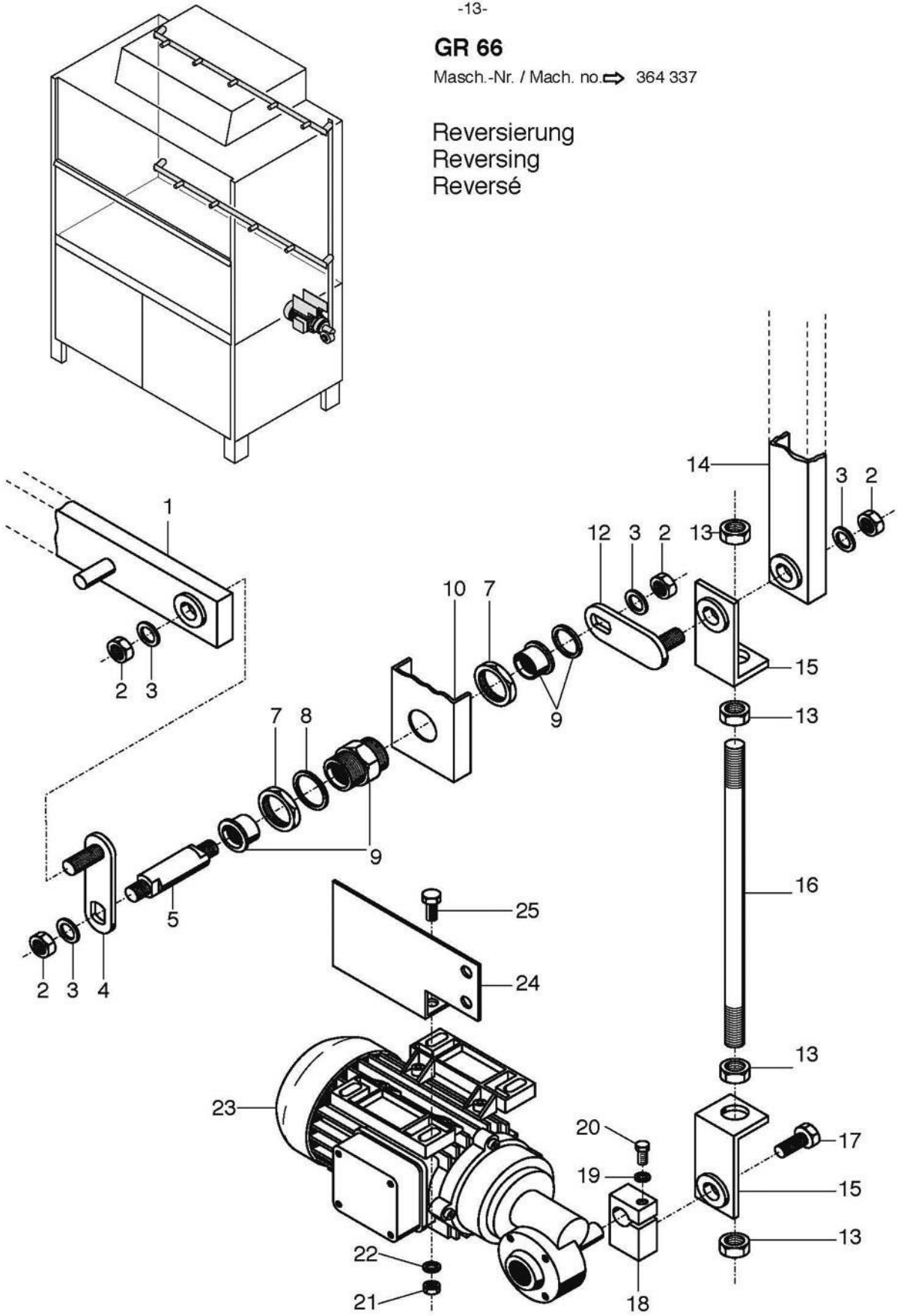
Waschsystem II
Wash system II
Système de lavage II



GR 66

Masch.-Nr. / Mach. no. → 364 337

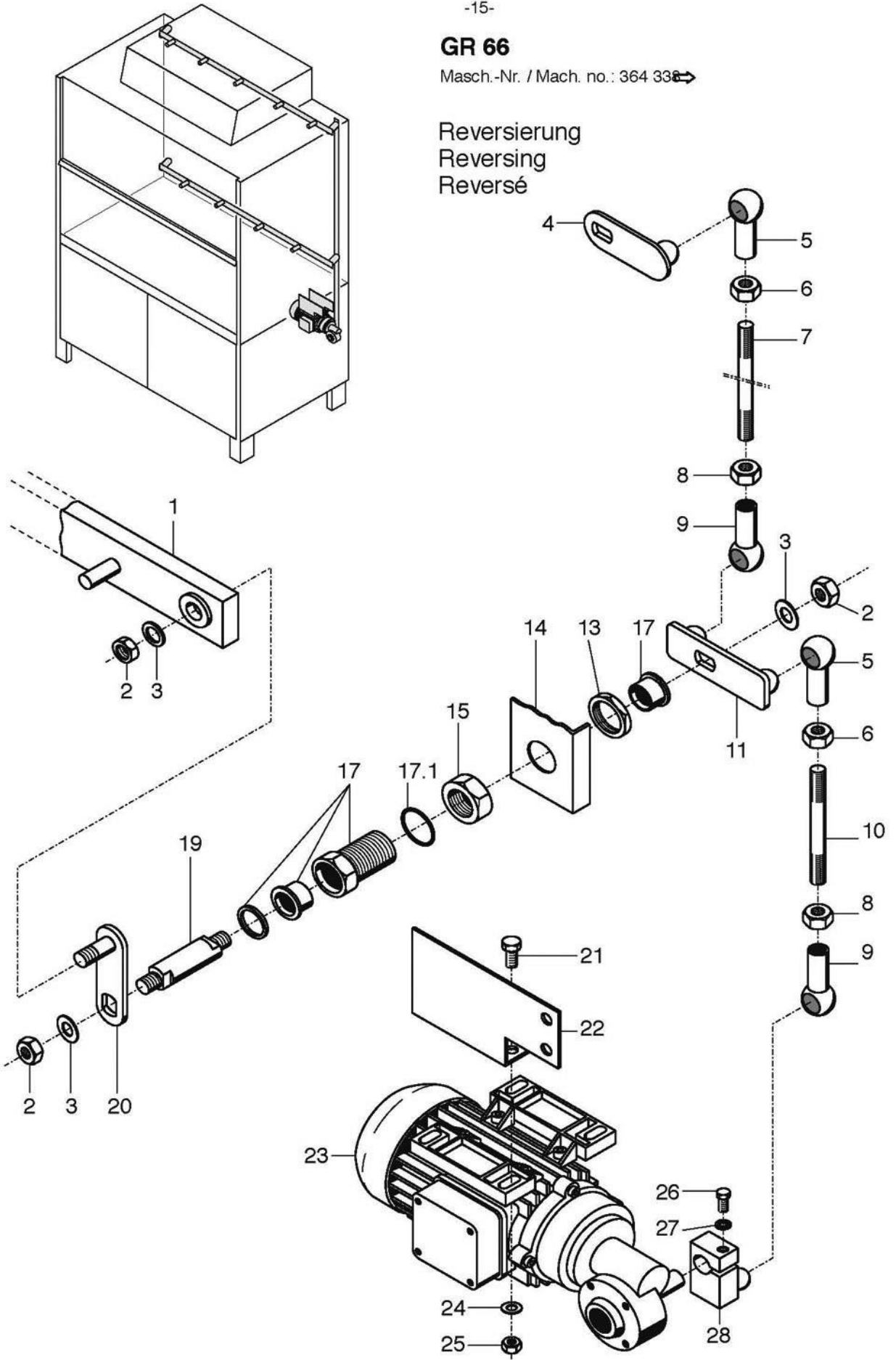
Reversierung
Reversing
Reversé



GR 66

Masch.-Nr. / Mach. no.: 364 338 →

Reversierung
Reversing
Reverse



GR 66

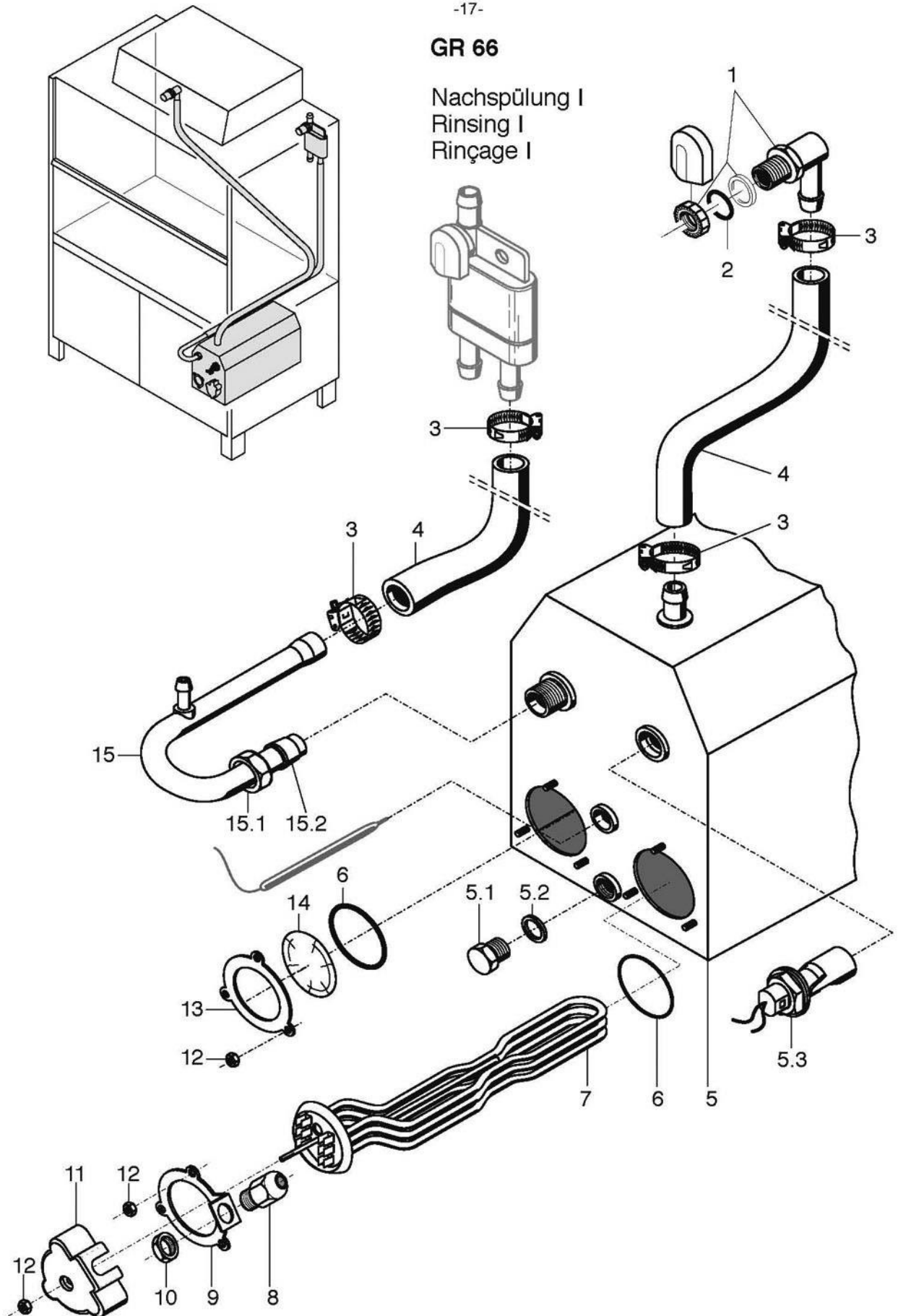
Machine no.: 364 338⇒

Reversing mechanism

Item	Designation	Part no.	Pc.	Notes
1	Push-rod; bottom	65003003		
n.p.	Push-rod; top	65003010		
2	Hex nut; M 6 self-locking	21 05 304		
3	Washer; \varnothing 6.4 x \varnothing 18 x 1.6	22 05 302		
4	Lever	60002391		
5	Ball cup; M 8	28 05 500	2	
6	Hex nut; M 8	21 01 305		
7	Threaded rod; M 8 x 952	65003807		
8	Hex nut; M 8 LH	21 01 001		Left-hand thread
9	Ball cup; M 8 LH	28 05 501	2	Left-hand thread
10	Threaded rod; M 8 x 180	65003806		
11	Lever	65003803		
13	Lock nut narrow; G 3/4" x 5; width across flats 32	61002626	2	
14	Angle; 1.5 x 57 x 1034	65003002		
15	Hex nut; G 3/4" x 10.0; width across flats 36	30 09 209	4	
17	Bearing bush	65004835	4	Incl. items 17.1
17.1	O-ring; 26 x 2,5	27 07 062		
	Seal; \varnothing 27 x \varnothing 34 x 2.0			replaced by 65004835
19	Reversing shaft; \varnothing 12 x 66.6	60002385	2	Right
	Reversing axle; \varnothing 15 x 57.3	60002384	2	Left
20	Reversing lever cpl.	65003078	4	
21	Hex-head screw; M 5 x 16	20 01 309		
22	Support	65003358	2	
23	Geared motor; 0.09kW; 230-400/280-480V; 50/60Hz	31 16 032		
	Geared motor; 0.09kW; 200/346V; 50Hz	31 16 053		
	Geared motor; 0.09kW; 200/346V; 60Hz	31 16 039		
24	Washer; \varnothing 5.3 x \varnothing 12 x 0.8	22 02 213		
25	Hex nut; M 5 self-locking	21 05 302		
26	Hex-head screw; M 6 x 16	20 01 306		
27	Lock washer; B 6	23 03 300		
28	Clamping block	65003864		

GR 66

Nachspülung I
Rinsing I
Rinçage I



GR 66

Rinse I

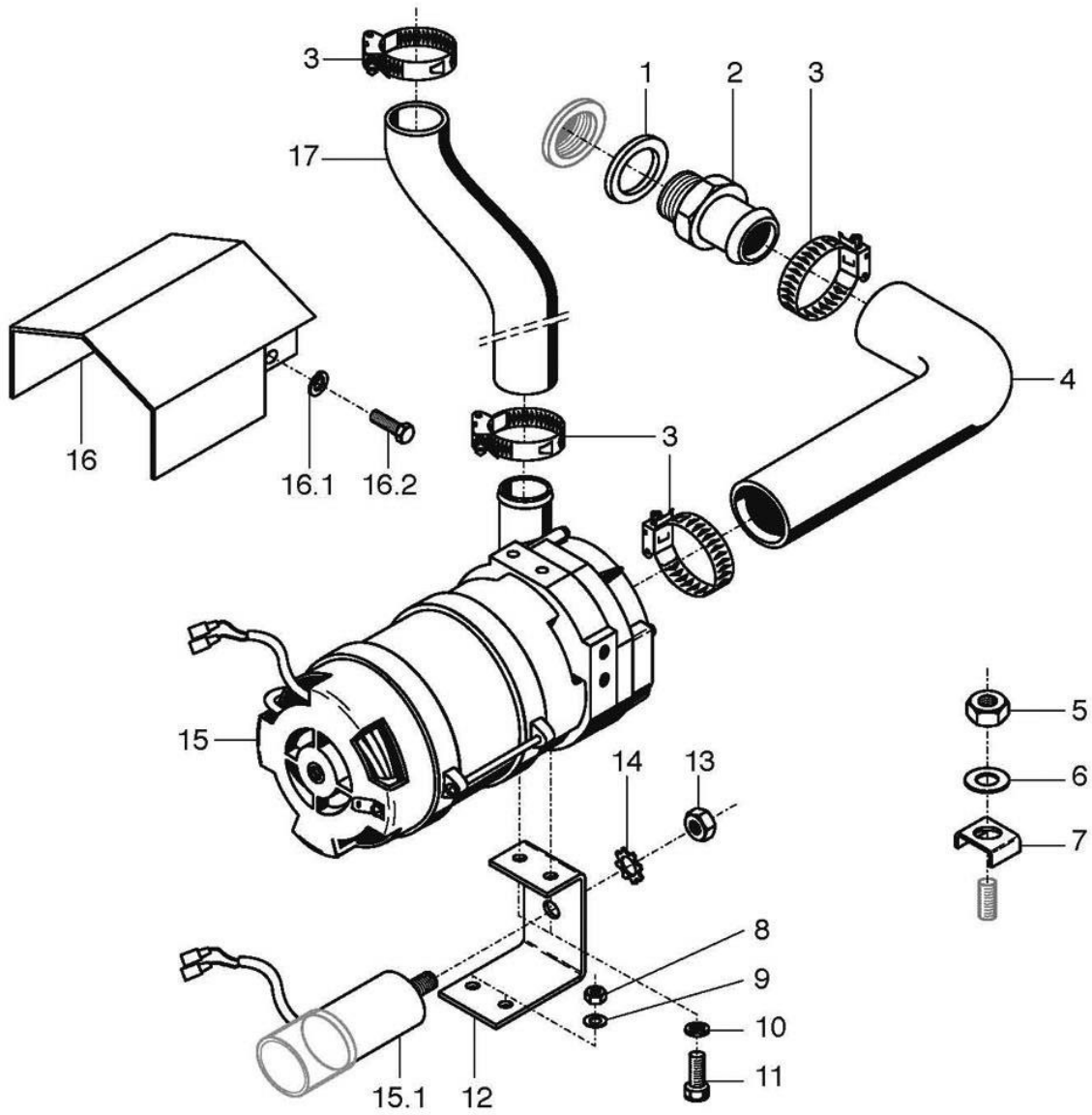
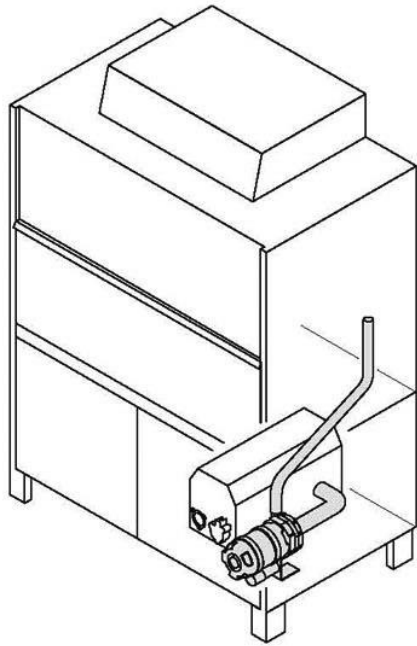
Item	Designation	Part no.	Pc.	Notes
1	Set tank inlet	55 31 007		Incl. items 2, 3
2	Seal; D21 x D28 x 2,0	27 09 011		replaced by 55 31 007
2	Seal; ø 20.5 x ø 28.5 x 2.0	27 01 002		replaced by 55 31 007
2	O-ring; 20 x 3	27 07 031		
3	Hose clip ø 14 - ø 24 x9	28 02 108		
4	Hose; DN 13.5 x 3.5 x 1550	40 02 029	2	Per metre
5	Boiler frame cpl., non-pressurised	80002128		Incl. items 5.1, 5.2 and 5.3
5.1	Hex-head screw; M 10 x 16	20 01 352		
5.2	Seal; ø 10 x ø 18 x 1.5	27 03 003		
5.3	Float switch; 250 V; 15 VA	55 28 255		
n.p.	Seal for float switch	31 26 036		
n.p.	Hose clip; ø 212 - ø 232	28 02 136		
6	O-ring; 43 x 7	27 07 069	2	
7	Heating element cranked; 6.0kW; 230/400V	31 03 017		
	Heating element cranked; 6.0kW; 240/420V	31 03 043		
	Heating element cranked; 6.0kW; 200/346V	31 03 046		
	Heating element cranked; 9.0kW; 230/400V	31 03 018		
	Heating element cranked; 9.0kW; 240/420V	31 03 057		
	Heating element cranked; 3.0kW; 200/346V	31 03 097		
8	Cable gland; PG 13.5	31 10 040		
9	Clamping plate	55 19 018		
10	Hex nut; PG 13.5	31 10 041		
11	Cap for heating element	31 03 014		
12	Hex nut; M 5	21 01 203		
13	Clamping plate	01 17 003		
14	Blind flange	60002787		Incl. items 6, 12, 13
15	Boiler supply pipe bend cpl.	55 09 055		Incl. items 15.1, 15.2
15.1	Cap nut; G 1/2" x ø 12.2; width across flats 24	29 07 201		
15.2	Cutting ring; ø 15 x 10; DN 12	29 07 300		
n.p.	Screw plug; G 1/2"	30 08 303		Left-hand side of boiler
n.p.	Seal; ø 21 x ø 28 x 2.0	27 09 011		

GR 66

Nachspülung II

Rinsing II

Rinçage II



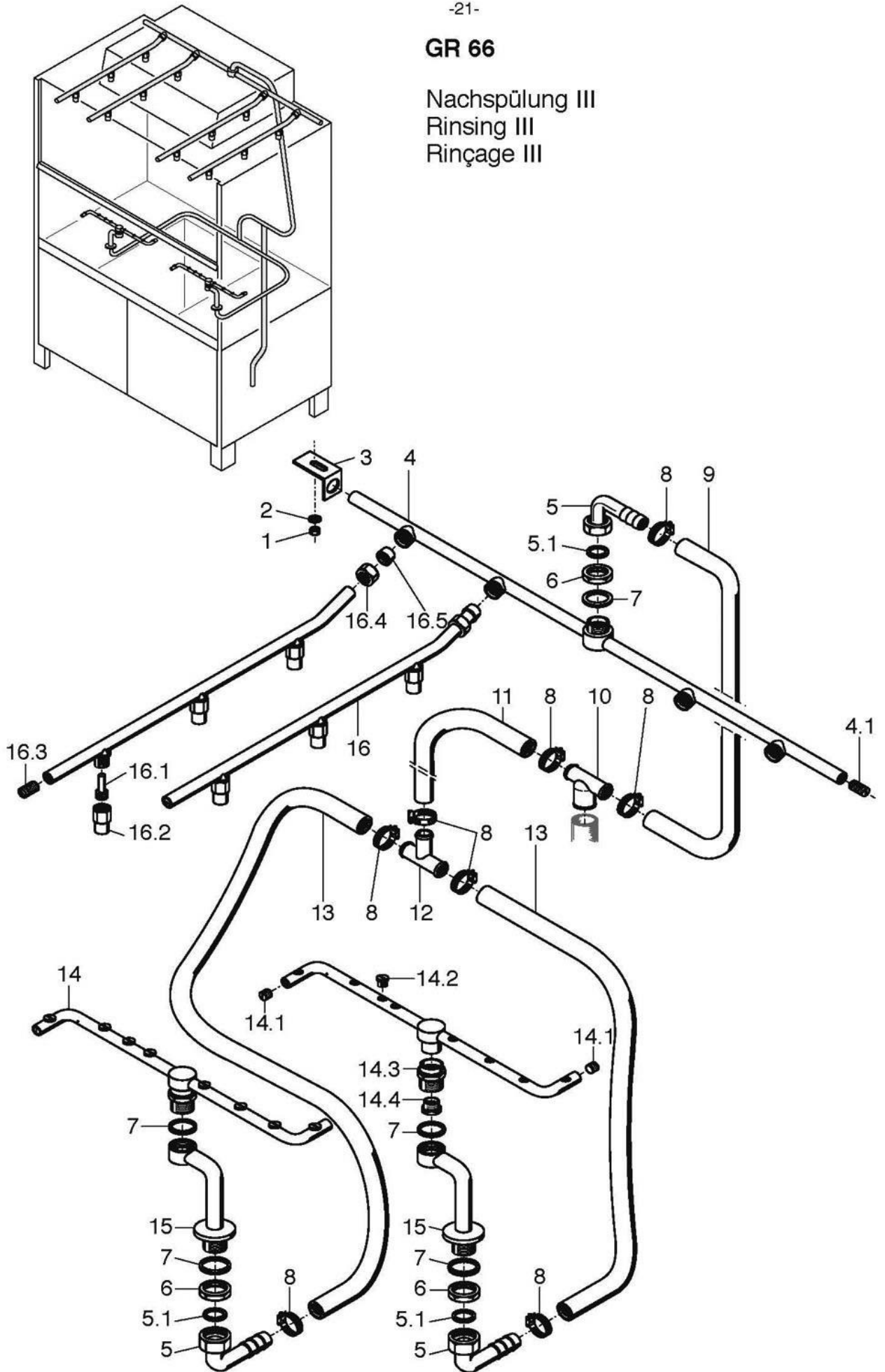
GR 66

Rinse II

Item	Designation	Part no.	Pc.	Notes
1	Seal; \varnothing 21 x \varnothing 28 x 2.0	27 09 011		
2	Boiler connecting nipple	80001403		
3	Hose clip; \varnothing 24 - \varnothing 44	28 02 309		
4	Shaped hose; DN 25 x 4; 80 x 130	80001902		
5	Hex nut; M 6	21 01 304		
6	Washer; \varnothing 6.4 x \varnothing 12.5 x 1.6	22 01 302		
7	Clamping bracket; 1.5 – 6.0 mm ²	31 09 095		
n.p.	"Equipotential bonding" sign	31 09 150		
8	Hex nut; M 5 self-locking	21 05 302		Pump support fastened to base frame
9	Washer; \varnothing 5.3 x \varnothing 12 x 0.8	22 02 213		
10	Lock washer; B 6	23 03 300		Pump fastened to pump support
11	Hex-head screw; M 6 x 16	20 01 306		
12	Pump support	80001482		
13	Hex nut; M 8	21 01 305		
14	Spring washer; B8	23 03 301		
15	Pump; 0.27kW; 1 x 220-240V; 50Hz	31 02 477		Incl. item 15.1
	Pump; 0.27kW; 1 x 220-240V; 60Hz	31 02 445		
	Pump; 0.27kW; 1 x 180-200V; 50Hz	31 02 446		
	Pump; 0.27kW; 1 x 180-200V; 60Hz	31 02 447		
15.1	Capacitor; 5 μ F; 250 V; 50/60 Hz	31 13 099		
16	Set guard plate	80002255		Incl. item 16.1, 16.2
16.1	Lock washer; B 6	23 03 300		
16.2	Hex-head screw; M 6 x 16	20 01 306		
17	Fabric hose; DN 25 x 4.5 x 1050	40 01 023		Per metre

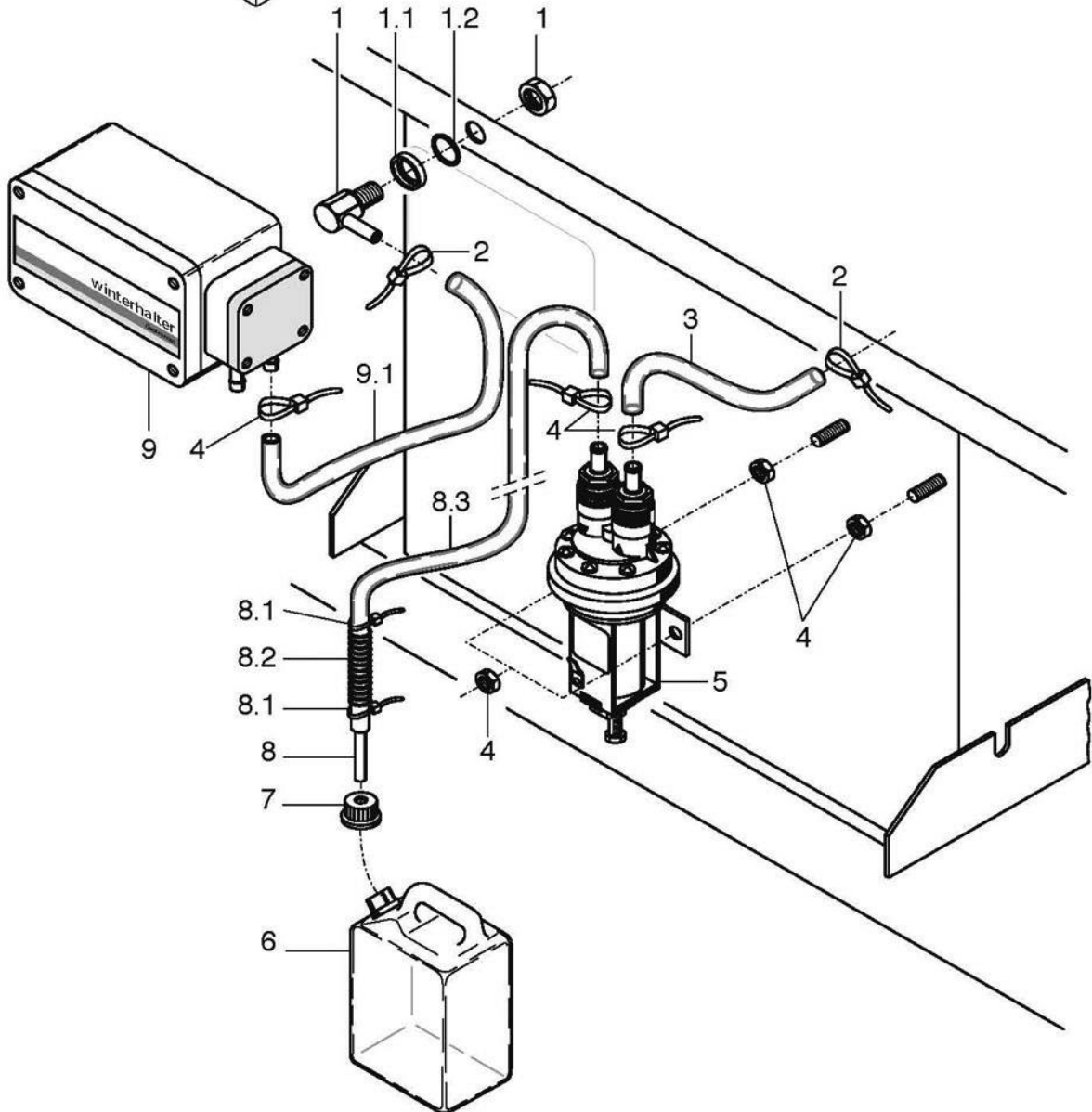
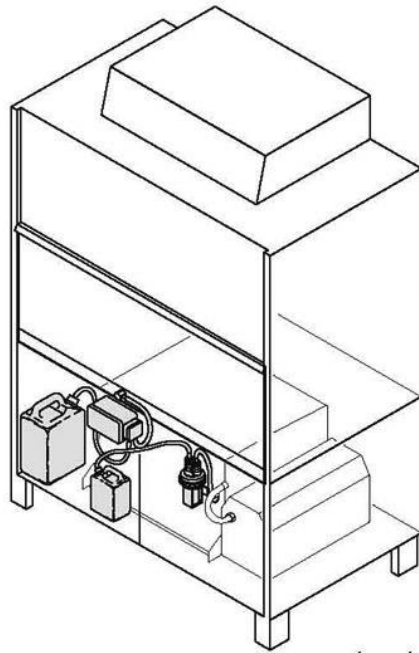
GR 66

Nachspülung III
Rinsing III
Rinçage III



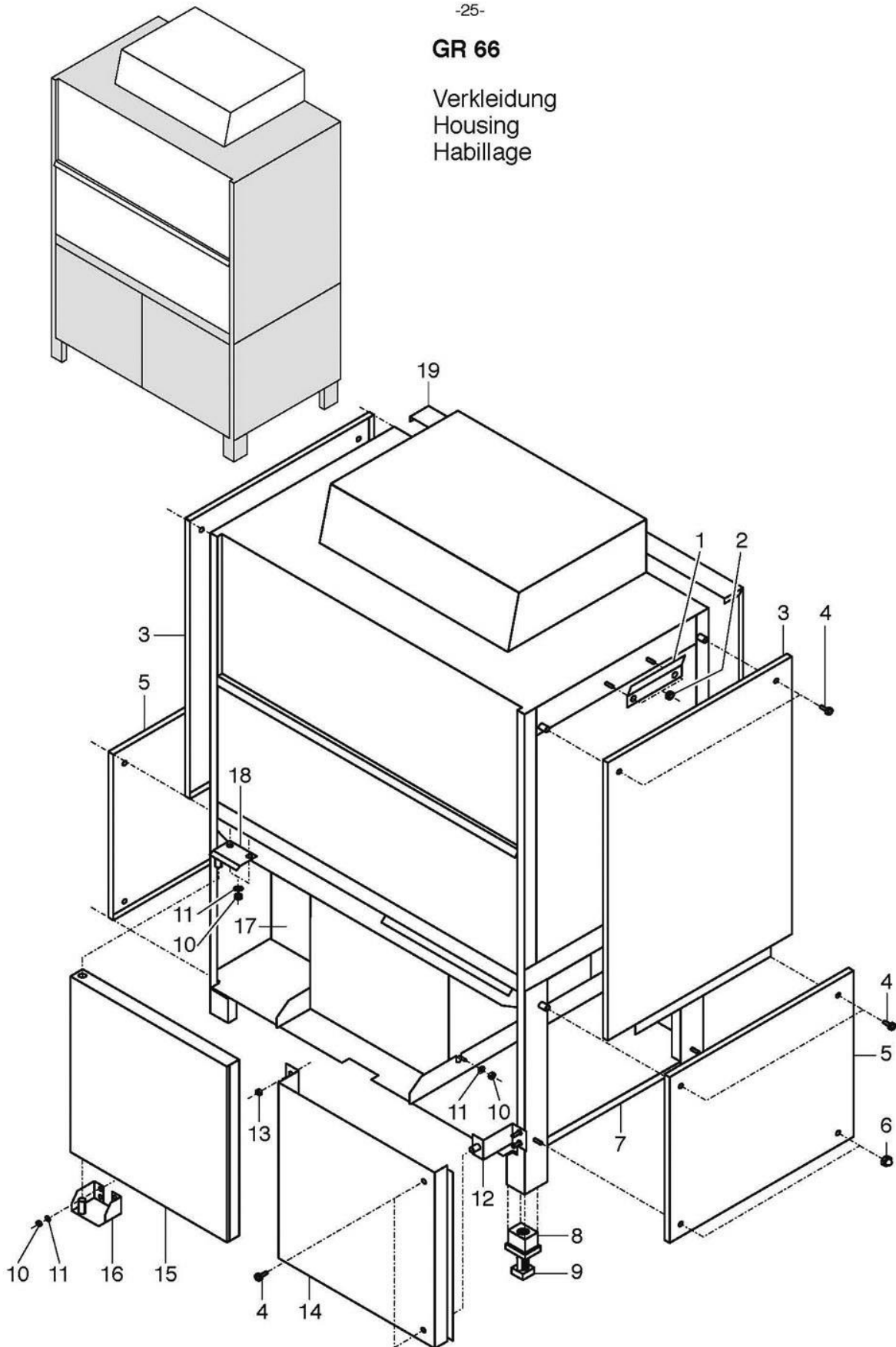
GR 66

Dosierung
Dosing
Dosage



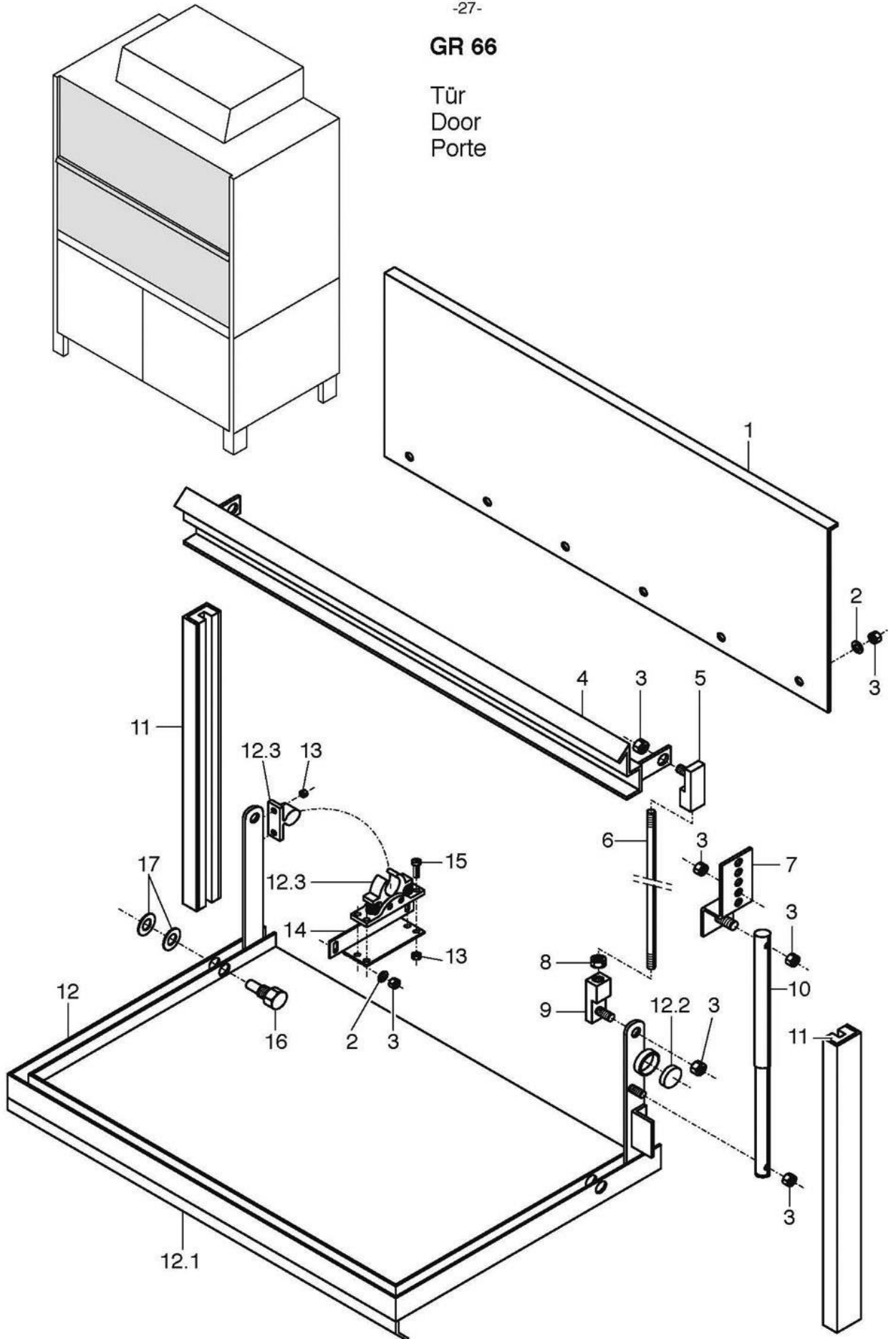
GR 66

Verkleidung
Housing
Habillage



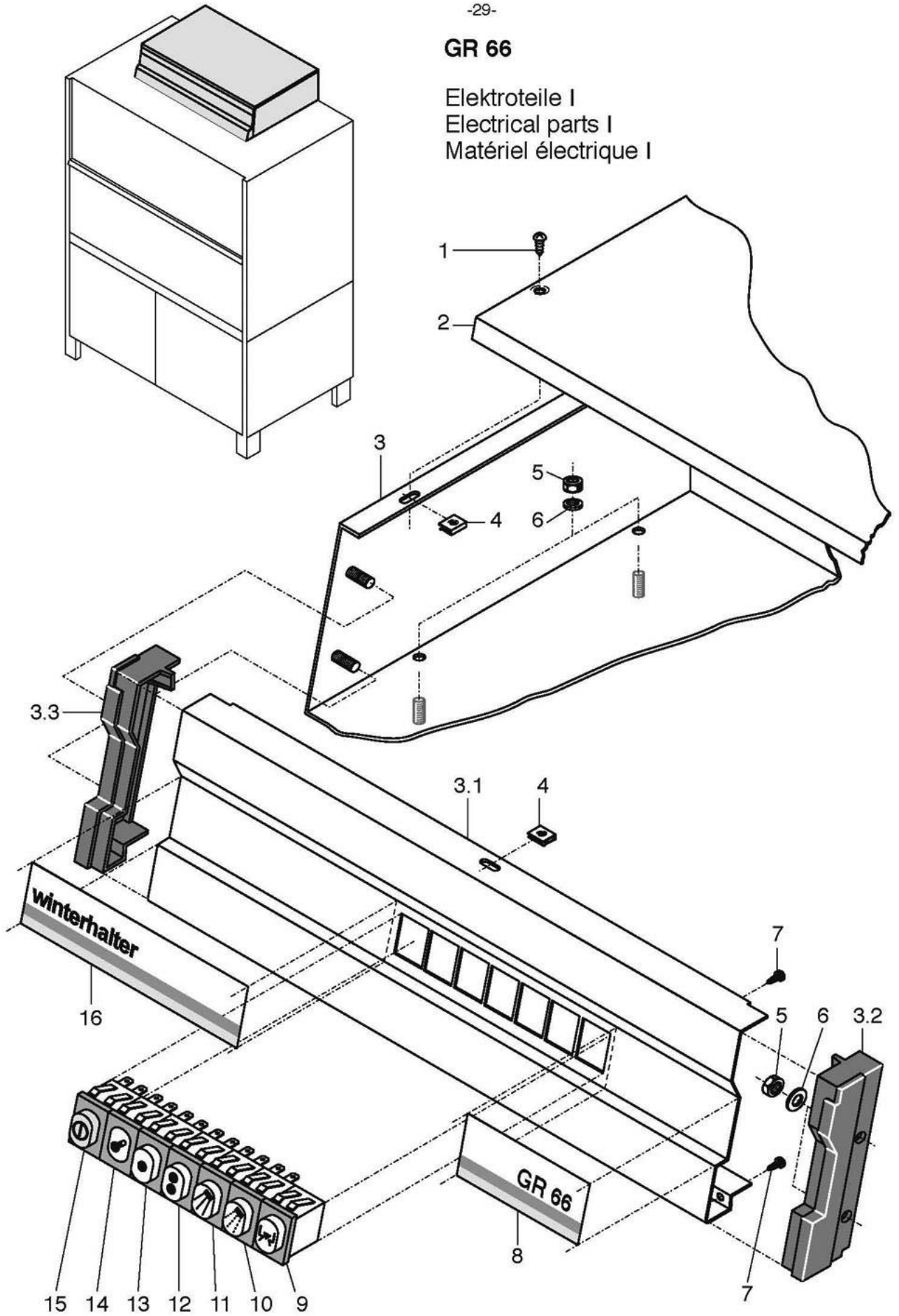
GR 66

Tür
Door
Porte



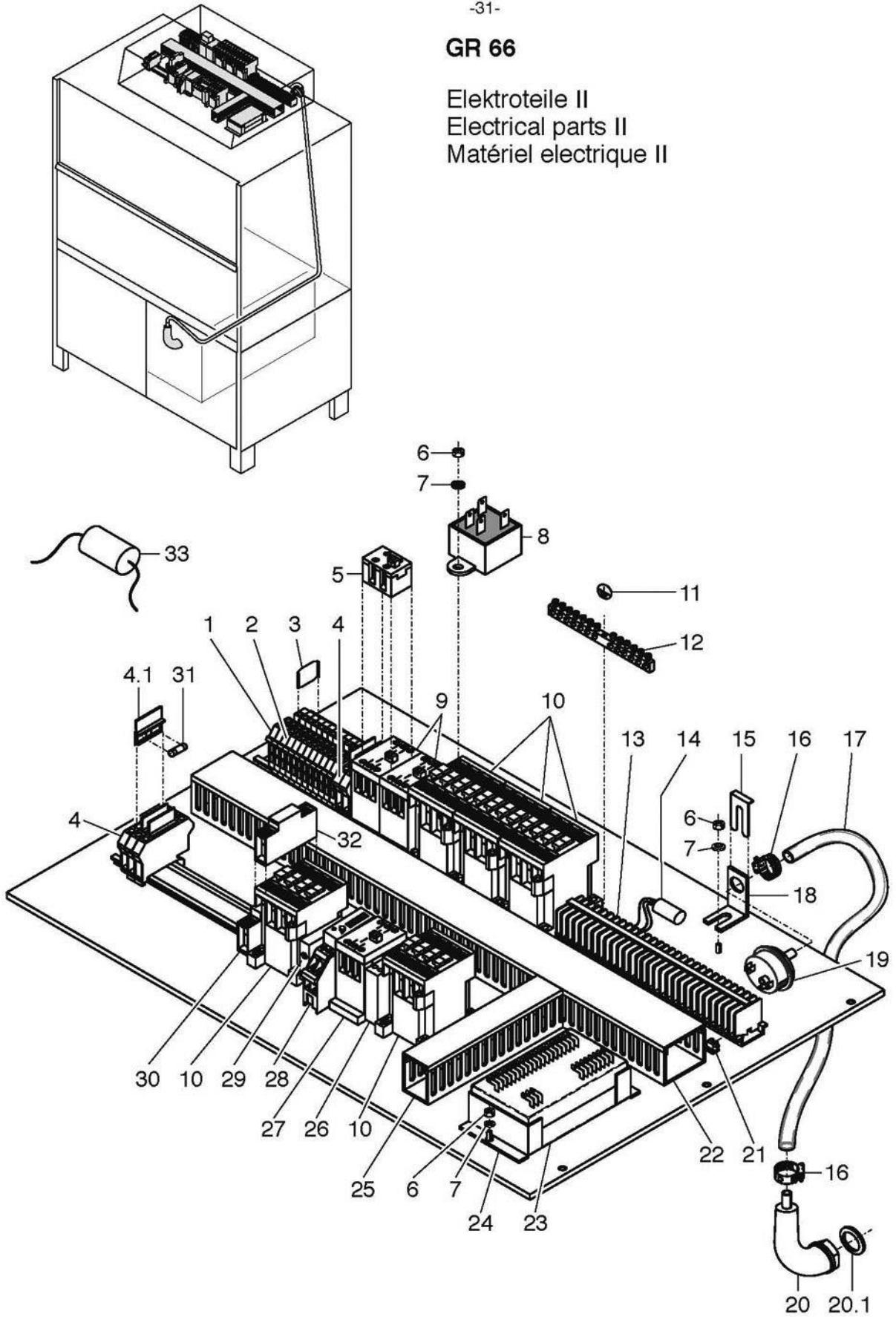
GR 66

Elektroteile I
Electrical parts I
Matériel électrique I



GR 66

Elektroteile II
Electrical parts II
Matériel électrique II



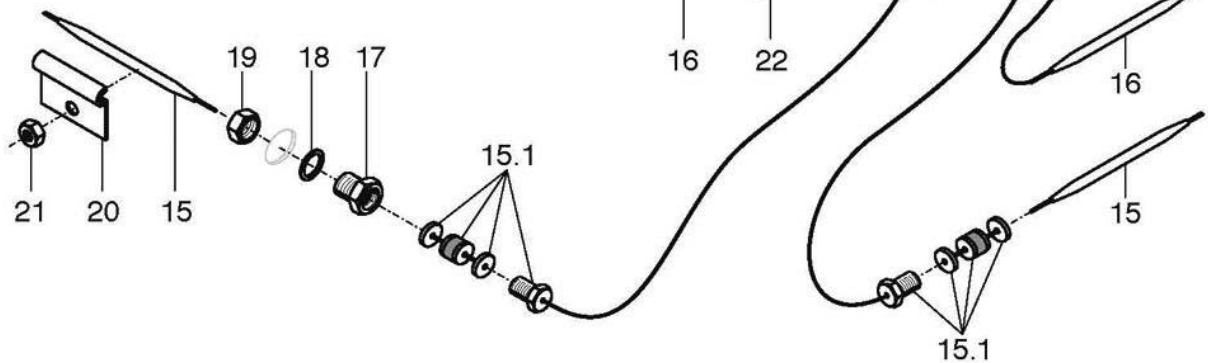
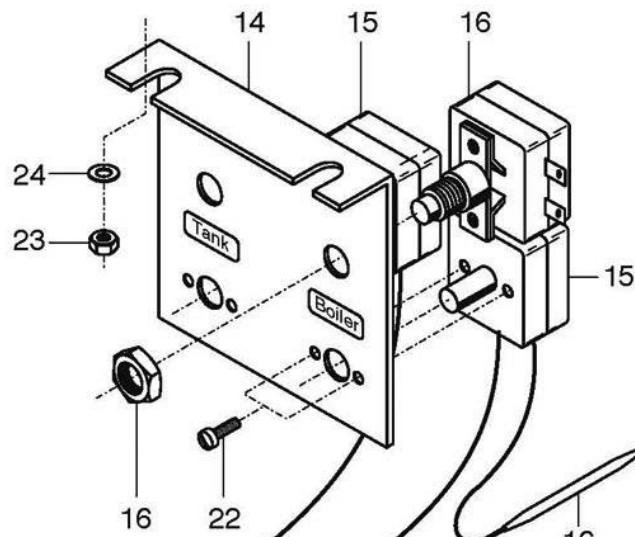
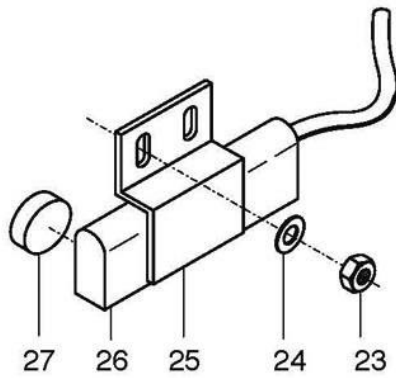
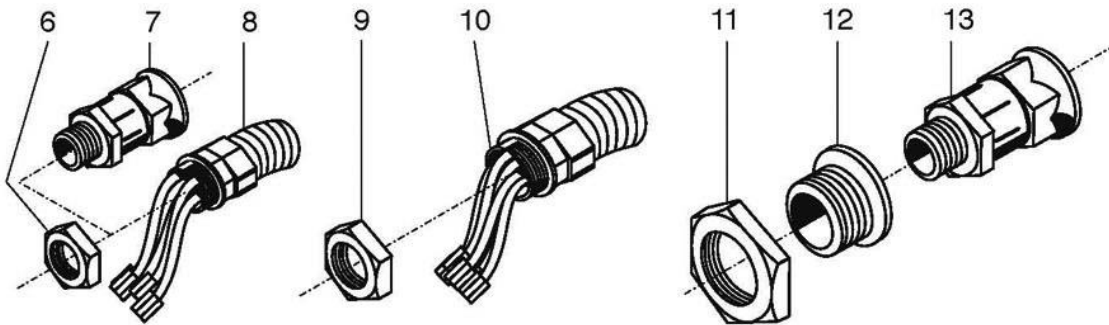
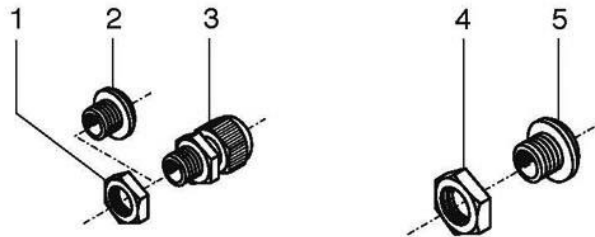
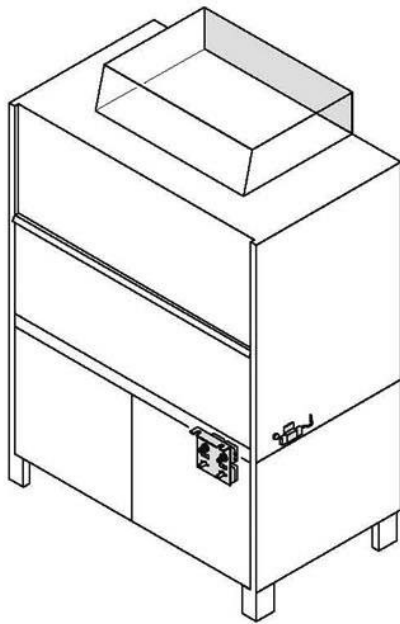
GR 66

Electrical parts II

Item	Designation	Part no.	Pc.	Notes
1	Universal terminal; yellow/green; USLKG 10	31 09 059	2	
2	Universal terminal; grey; UK 10	31 09 057	10	
n.p.	Universal terminal; blue; UK 10	31 09 058	2	
3	Isolating disk; TS-K	31 09 066	3	
4	Universal fuse terminal; UK-Si	31 09 063	5	incl. item 4.1
4.1	Fused plug	31 09 072		
5	Contact module; LA1-SK11	31 04 130		
6	Hex nut; M 4 self-locking	21 05 300		
7	Washer; \varnothing 4.3 x \varnothing 12.0 x 1.0	22 05 300		
8	Radio interfer. suppr. capacitor; 3 x (0.47 μ F + 1M Ω)	31 13 072		
9	Contactor relay; 220-240V; 50/60Hz; CA2-SK20	31 04 115	2	
10	Contactor; 220-255V; 50/60Hz; A 16	31 04 162		(Heating element)
	Contactor; 200-220V; 50/60Hz; A 16	31 04 163		Japan (heating element)
	Contactor; 200-220V; 50/60Hz; A 30	31 04 165		Japan (pump)
	Contactor; 220-255V; 50/60Hz; A 30	31 04 164	2	Delta system 3 x 230V (pump)
11	Earth symbol; green/yellow	31 09 096		
12	Terminal block; PE KLB 12/SEV	31 09 094		
13	Strip terminal BK 4 - FS/FS	31 09 025	30	
14	Radio interference suppr. capacitor; 0.1+2x0.01 μ F	31 13 071		
15	Clamping spring for level controller	31 26 001		
16	Wire hose clamp; D8,6 x 1	28 02 348		
17	Hose; DN 5 x 1.5 x 2450	40 01 024		Per metre
18	Level switch angle	61002345		
19	Level controller; 300/100 \pm 10	31 26 017		Yellow
20	Air chamber	55 04 024		Incl. item 20.1
20.1	Seal; \varnothing 26 x \varnothing 36 x 2.0	27 01 003		
21	Straps	31 09 012	8	
22	Cable duct; 60 x 40 x 600	65002771		
23	Electr. Programme Switch; EPS 1.1; 230V	31 05 131		
	Electr. Programme Switch; EPS 1.1; 200V; 240V	31 05 132		
24	Holder for programme switch	61003088	2	
25	Cable duct; 60 x 25 x 180	65002772		
26	Coupling relay; 180-254V; 2A	31 04 139		
27	Contactor relay; 220-240V; 50/60Hz; CA2-SK11	31 04 114		
28	Time-delay relay; 24-240V; 50-400Hz; 0,3-800s	31 04 131		
29	Closing delay device; 1 - 60s	31 13 066		
30	Auxiliary switch; make contact; break contact	31 04 172		with triangle power supply only
31	Fine-wire fuse 250 V; 6,3A	31 11 043	4	
	Fine-wire fuse 250 V; 1A	31 11 039	6	
32	Auxiliary switch, make contact	31 04 166		
	Auxiliary switch, break contact 200V/230V	31 04 167		
33	Radio interference suppr. capacitor; 33000pF; 250V	31 13 073		
n.p.	Additional wires for switch box	65003241		Door limit switch, drain valve
n.p.	Wire assortment for switch box	65002946		
n.p.	Wire assortment for creep start	65000264		

GR 66

Elektroteile III
Electrical parts III
Matériel électrique III



GR 66

Electrical parts III

Item	Designation	Part no.	Pc.	Notes
1	Hex nut; PG 9	31 10 043	3	
2	Screw cap; PG 9	31 10 021	2	
3	Cable gland; PG 9	31 10 042		
4	Hex nut; PG 11	31 10 045		
5	Screw cap; PG 11	31 10 020		
6	Hex nut; PG 16	31 10 110		
7	Cable gland; PG 16 with strain relief device	31 10 049		
8	Cable harness; control system	65003246		
9	Hex nut; PG 21	31 10 071		
10	Cable harness; three-phase current	65003248		
11	Hex nut; PG 29	31 10 047		
12	Reducing ring; KUK 29/21	31 10 091		
13	Cable gland; PG 21 with strain relief device	31 10 070		
14	Thermostat support	65002459		
15	Thermostat; 1750 lg.	31 25 013	2	incl. item 15.1
15.1	Stuffing box gland	31 25 012		
16	Safety thermostat; 140°C - 10 K "OFF"	31 25 030		
17	Stuffing box for thermostat; M 14 x 1	31 25 001		
18	Seal; \varnothing 14.2 x \varnothing 20 x 2.0	27 09 036		
19	Hex nut; M 14 x 1 x 5	31 25 002		
20	Thermostat clip	55 19 011		
21	Hex nut; M 4 self-locking	21 05 300		
22	Pan-head screw; M 4 x 6	20 10 309		
n.p.	Lock washer; B 8	23 03 301		
23	Hex nut; M 5 self-locking	21 05 302		
24	Washer; \varnothing 5.3 x \varnothing 12 x 0.8	22 02 213		
25	Support cpl.	65003234		
26	Magnetic switch; 180-265V; 50/60Hz	31 24 221		
27	Magnet; red	31 24 112	2	
n.p.	Cable, door limit switch	65003332		
n.p.	Coupling piece	31 12 021		
n.p.	Countersunk screw M 3 x 16	20 08 205		
n.p.	Pump cable, creep start	65003489		
n.p.	Heating element cable, creep start	65003488		